

SLM-6L/6M/6H Portable Slit Lamp

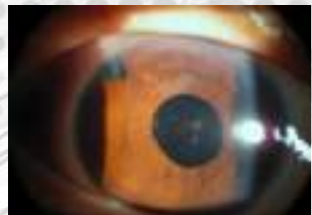


With all the functions of a desktop slit lamp, has patented technology; Easy to operate, convenient to carry, especially for migrant clinic, ward rounds to check; Unique dual objective lens(1.0X, 1.6X) zoom, with high practicality; 3 magnifications 10X, 16X, 25.6X;

- ⊙With all the functions of a desktop slit lamp, especially for migrant clinic, ward rounds to check.
- ⊙Long standby use, up more than 5 hours(continue use).
- ⊙Bright white LED light bulbs, brightness≥30000lux, life of more than 50,000hours.
- ⊙Four kinds of spot size, the minimum Φ0.2mm, maximumΦ12mm.
- ⊙Variety of filters, cobalt blue, red free, Grey filter.
- ⊙Lightweight and compact, weighing only 700g(including battery)

Optional phone camera system

Support Iphone, Samsung and other major brand mobile phones
Equipped with a dedicated camera interface, simple shooting



Technical Specification

Item		Model	SLM-6L	SLM-6M	SLM-6H
Microscope	Microscope Type	Converging			
	Objective Lens	1.0x	1.0x 1.6x	1.0x 1.6x	
	Eyepiece	10x	10x	10x 16x	
	Total Magnifications	10x	10x 16x	10x 16x 25.6x	
	Working Distance	81mm			
	Intraocular Distance	45mm-78mm			
	Diopter Adjustment	-8D ~ +8D			
Illumination	Slit Width	0-12mm Continuous			
	Slit Height	12mm	1-12mm	1-12mm	
	Slit Angle	Horizontal +30°			
	Light Spot Diameter	Φ 12mm	Φ 0.2mm; Φ1mm; Φ5mm; Φ12mm		
	Filters	Heat Absorption; Yellow; Redfree (Green); Cobalt Blue			
	Illumination Bulb	High- Brightness White LED			
	Brightness	>30000Lux			
	Power	5VA			
Power	Charging Voltage	AC 100 ~240V, 50/60Hz			
	LED Working Voltage	DC 3V, 350mAh			
	Battery	Li-ion Battery; 7.4V, 680mAh. Full Battery can supply 5-6 hours continuously			
Weight and Dimension	Dimension	169.5 x 109.5 x 228.5mm			
	Weight	700g (Including Battery)			